

CERTIFIED RECORD OF LAND CORNER MONUMENTATION

History of original corner establishment: \*

The original corner was set in 1881 by Robb and Gradon under Contract No. 383, dated March 26, 1881.

The original notes state:

- S0°51'W on true line between Secs 5 & 6
- 39.15 Set stone 12x10x6 for 1/4 Sec Cor from which
  - A pine 8 in dia bears N 40° E 53 lks dist
  - A pine 14 in dia bears N 37° W, 95 lks dist

DIAGRAM  
T10S R32E  
1/4  
S61S5

Description of corner evidence found:

Found a 12x10x6" stone at approximately record distance and direction from the original bearing trees.  
A 8" P.Pine snag bears N 40° E, 35.7 ft (N 40° E, 53 lks), scribed 1/4SBT.  
A 19" P.Pine bears N 34° W, 63.4 ft (N 37° W, 95 lks), fragmentary scribing visible in blaze.

Description of monument and accessories I establish to perpetuate the original location of this corner:

I reestablish this corner at the mean distance and direction from the two original bearing trees. Set a 2 1/2"x28" aluminum monument 18" in the ground in a mound of stone.

I establish new bearing trees:

- An 8" P.Pine bears N 3° E, 56.7 ft, scribed 1/4S5BT.
- A 13" P.Pine bears S 58° W, 50.5 ft, scribed 1/4S6BT.

T10S R32E  
1/4  
S61S5  
PLS1918  
1988

New BTs have 3/4" brass washers marked PLS1918 attached to the BT blaze, faces and bands painted with red tree marking paint, and BT tags and Attention or Land Survey Monument signs. A steel fence post with Attention or Land Survey Monument sign is driven approximately 3-5 feet from the corner.

Sun Cadastral Survey, Cont No. 53-04H1-7-4011

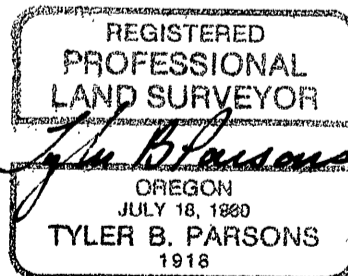
Field Book: 4-19 & 6-19.

Work accomplished: 8/22/88

Witnesses: Tyler Parsons, Louise Parsons  
Sharon Parsons, Douglas Parsons

Job No.: 8722I

PARSONS SURVEYING  
1915 S.E. Stone Street  
Corvallis, OR 97333  
(503) 752-7515



Office of COUNTY SURVEYOR County of GRANT  
State of OREGON, I hereby certify that the within instrument was filed in this office  
for record on the 14th day of Feb, 1989

Robert D. Bayart by \_\_\_\_\_  
(COUNTY OFFICIAL) (DEPUTY)